

# octopus 17

## **DESCRIPTION OF TECHNICAL SPECIFICATIONS**

Octopus 17 is the perfect solution for activity requiring two operators working at height. These models are fitted with a special load limiter with digital display which, before lifting, is capable of selecting the work area for one or two operators. This device ensures maximum safety when working at height. The compact narrow dimensions during transfer (only 78 cm) means Octopus 17 can travel down narrow passageways and even through a standard household doorway. As well as a diesel or petrol engine, Octopus 17 can also be powered electrically using a standard domestic 220 V power supply to prevent noise pollution and the build-up of exhaust fumes.

### **BASE FRAME**

Sheet steel structure. Hydraulically operated track drive system with rubber track pads providing a wide support surface. The tracks, powered separately and fitted with safety brakes, allow for easy operation on steep gradients. The base frame houses all the electrical and hydraulic components as well as the heat engine and electric motor which create the hydraulic power required for machine operation.

### **OUTRIGGERS**

Stability is provided by 4 outriggers actuated using hydraulic pistons. The lower part of each outrigger is fitted with a hinged, ground-support plate which can be articulated in all directions for perfect conformity with the terrain. The outriggers are stowed fully within the man body of the machinery.

### **BOOM SUPPORT**

Made from extremely resistant sheet steel. Movement is achieved using a rack and worm screw system.

### **TWIN PANTOGRAPH**

Fitted with a twin pantograph articulation system ensuring unrivalled performance and movement for elevated work platforms of this type and, most importantly, perfectly vertical ascent and descent.

### **BOOM AND JIB**

Designed with 2 components, including a telescopic one, made from steel with a very high enervation limit.

The boom is extended using an internal cylinder.

Jib actuated by a hydraulic cylinder and consisting of 2 bars for pantograph movement. Jib rotation is 85°.

### **BUCKET**

Made entirely from aluminium. Fitted with front opening with safety barrier and gravity latch for easy operator access. The bucket is secured using a quick-release system ensuring extremely compact dimensions when the equipment is being moved.



## **OIL&STEEL SPA**

Via Verdi 22  
41018 San Cesario Sul Panaro  
Modena - Italy

Subject to management and coordination  
by PM Group spa sole shareholder of company  
Modena register of companies no. 280699  
Tel. +39 059 936811 Fax +39 059 936413

SHARE CAPITAL € 362,400.00 (fully paid-up)  
TAX CODE/VAT NO. 02313650364  
[www.oilsteel.com](http://www.oilsteel.com) – [info@oilsteel.com](mailto:info@oilsteel.com)

## BUCKET LEVELLING

Hydraulic parallelogram system allowing for corrections in the event of bucket positioning misalignment.

## CONTROLS

Transfer and stabilisation are controlled by a hydraulic distributor providing separate movements. The control distributors for the telescopic structure are in turn controlled by proportional sensitivity levers. The bucket operating position is fitted with a small electrical panel containing the various alarm and warning lights and the engine start button. The bucket and the base frame can both be levelled manually from this operating position.

All operating positions are fitted with a self-held emergency stop button to shutdown the engine.

## DEVICES FITTED AS STANDARD

- Boom outrigger interlock
- Attachments for safety harnesses on the bucket
- User and maintenance booklet
- Bucket load limiter
- Manual pump for emergency descent
- Electrical system overload switches
- Hydraulic circuit max. pressure valve
- Cylinder lock valves
- Removable two-operator bucket 1400 x 700 x h 1100
- Machine operation hour counter
- Single-phase, auxiliary 220 V - 110 V AC - 2.2 kW electric pump including electrical control panel and battery charger powered using an external source
- Machinery guard
- Outriggers fitted with illuminated position indicators
- Engine and auxiliary motor can be switched ON/OFF from the bucket
- Pair of black track belts
- Automatic brake during transfer
- Single-phase, 220 or 110 V AC power socket and differential overload switch fitted on bucket
- Control priority on bucket
- Engine emergency stop button
- Transfer warning siren
- Good stability warning lights
- Engine starter control unit on bucket
- Cylinder lock valves
- Single/two operator switch to enable the 2 operating areas
- Bucket pantograph and boom electrically-controlled emergency descent solenoid valves



## **SPECIFICATIONS AND PERFORMANCE**

<b>Max. operating height</b>	17 m
<b>Max. boom overhang</b>	6.8 m
<b>Maximum load</b>	200 kg / 2 operators
<b>Max. no. of operators</b>	2
<b>Removable aluminium bucket dimensions</b>	1400 x 700 x h 1100 mm
<b>Controls</b>	hydraulic
<b>Boom support rotation</b>	350°
<b>Vehicle kerb weight</b>	1980 kg

## **OPTIONS AVAILABLE ON REQUEST**

- Pair of white non-marking tracks for use indoors instead of the standard ones
- Wax protection system for shipping by sea
- Decals on boom
- Water and air supply line to bucket
- Auxiliary Lombardini 15 hp diesel engine
- Elevated work platform and boom treated with corrosion-resistant paint
- Painting options (standard white RAL 9016)
- 2 safety harness kits with rope
- Set of 4 large Nylatron outrigger support plates with diameter of 300 mm instead of the standard ones

octopus 17

### **OIL&STEEL SPA**

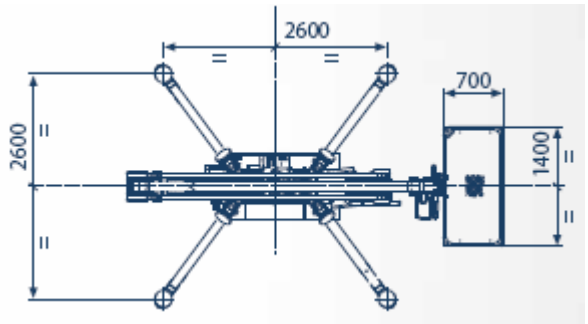
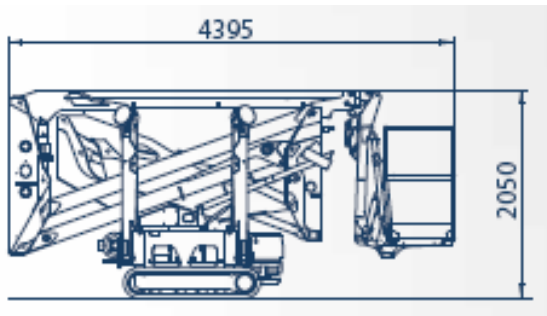
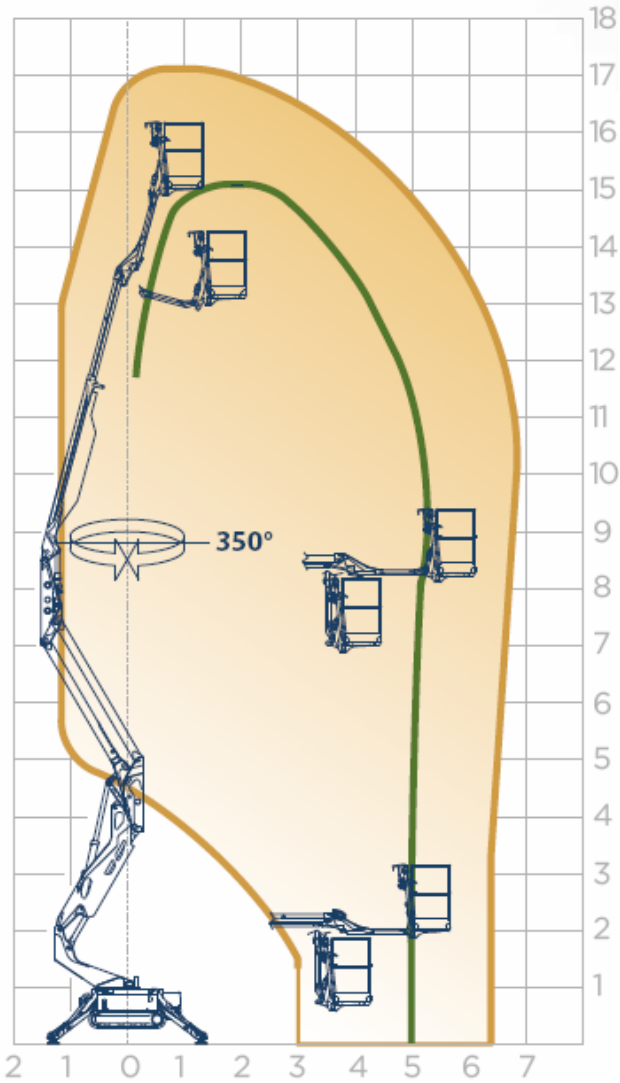
Via Verdi 22  
41018 San Cesario Sul Panaro  
Modena - Italy

Subject to management and coordination  
by PM Group spa sole shareholder of company  
Modena register of companies no. 280699  
Tel. +39 059 936811 Fax +39 059 936413

SHARE CAPITAL € 362,400.00 (fully paid-up)  
TAX CODE/VAT NO. 02313650364  
[www.oilsteel.com](http://www.oilsteel.com) – [info@oilsteel.com](mailto:info@oilsteel.com)

**OPERATING AREA AND MACHINE DRAWINGS**

**octoplus 17**



**OIL&STEEL SPA**  
Via Verdi 22  
41018 San Cesario Sul Panaro  
Modena - Italy

Subject to management and coordination  
by PM Group spa sole shareholder of company  
Modena register of companies no. 280699  
Tel. +39 059 936811 Fax +39 059 936413

SHARE CAPITAL € 362,400.00 (fully paid-up)  
TAX CODE/VAT NO. 02313650364  
www.oilsteel.com – info@oilsteel.com