



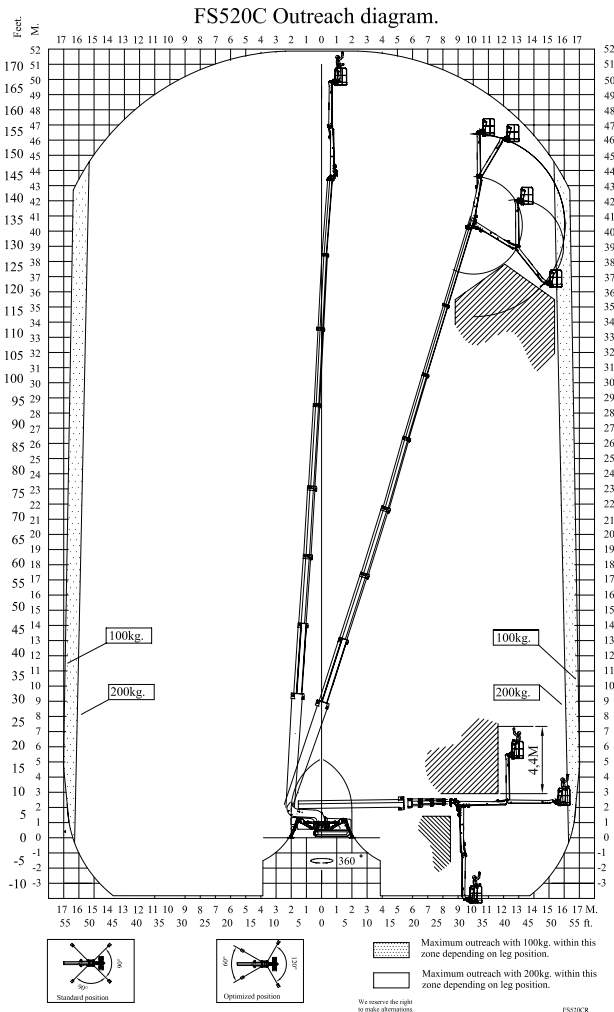
FS520C FALCON

Model:	FS520C
Working height:	52 m
Maximum reach:	17 m
Linkarm (2 x 3 m):	6 m
Double linkarm:	200°
Basket load:	200 kg
Aluminium basket:	(0,8 x 1,4 m)
Basket rotation (option):	+/- 90°
Turret rotation:	375°
Dimensions (transport position)	
Total height:	2,10 m
Total length:	9,30 m
Total width (min):	1,25 m
Total width (max):	1,60 m
Gradability (standard):	20°/37%
Weight approx.:	13.500 kg*

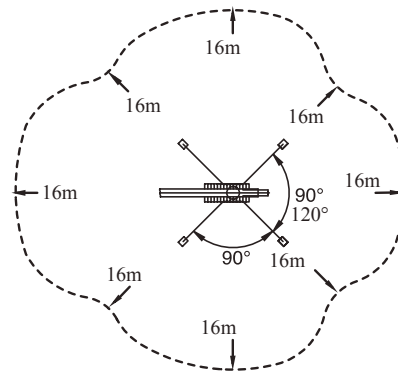
*Depending on optional equipment



FS520C



Standard and optimised position



Basket load = 100 and 200kg.

Standard equipment:

- Automatic stability & outreach control
- Computer controlled (can-bus)
- Proportional control of all functions
- Self-propelled
- Battery powered with charger
- Double link-arm system
- 375° turret rotation, with integrated stop
- +/- 90° basket rotation
- Individual setting of each outrigger
- Electronic checking of the power system (PLC)
- 420V AC direct powered electro motor
- Manual pump system for emergency lowering
- Ability to self-load onto trucks or trailers
- Double crawler system
- Front crawler section adjustable
- Variable width
- Minimum width only 1,25 m
- Space for tools etc. in basket
- Storage room in chassis with lock
- Diesel engine, Lombardini (4-cyl)
- Chassis control from basket

Options:

- 220V AC power supply in the basket
- Air/water supply in the basket
- Sensor system on basket
- Non marking crawlers
- Slope alarm
- 4 pcs extra batteries
- Autosetting/levelling
- Portable control panel
- Special outrigger footplates
- Basket in various sizes
- Special colour
- Anemometer wind warning system